



Monastiraki Center Office №3/4/5 Georgiou A1 Street, Limassol 4040, Cyprus (P.O. Box 52309-4063)
T. +357 25 322 112 | F. +357 25 322 132 | office@cypruspropertygallery.com
Call Free 8000 83 84

cypruspropertygallery.com



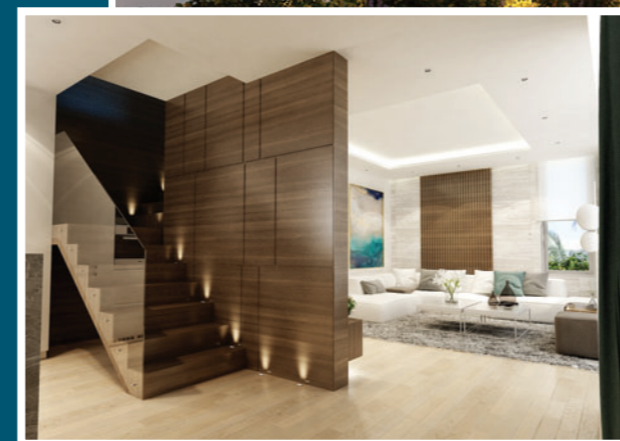


Elegant homes at Venera Residences are as individual as its future residents, seeking to invest in the enviable lifestyle.

With impeccable completion and uncompromising attention to detail, materials and finishes of Venera Residences were hand-picked by our team of professional designers.

Spacious living areas assure carefree living on the edge of sun-soaked Mediterranean coast and only a half hour drive to the picturesque mountain villages of Troodos with their charming wineries, tavernas and winter ski resorts.

Communal swimming pool and allocated parking areas complement to the five star rating of this unique development radiating a beautiful sense of escape and relaxation.





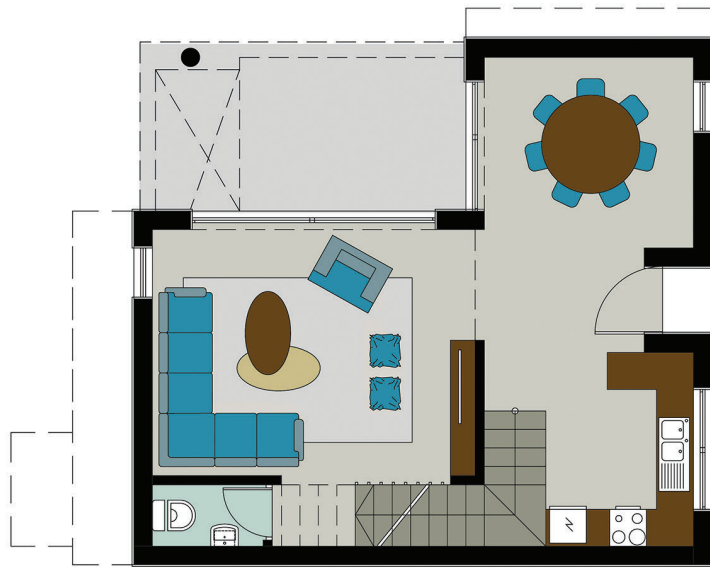
villas

experience the
ULTIMATE COMFORT

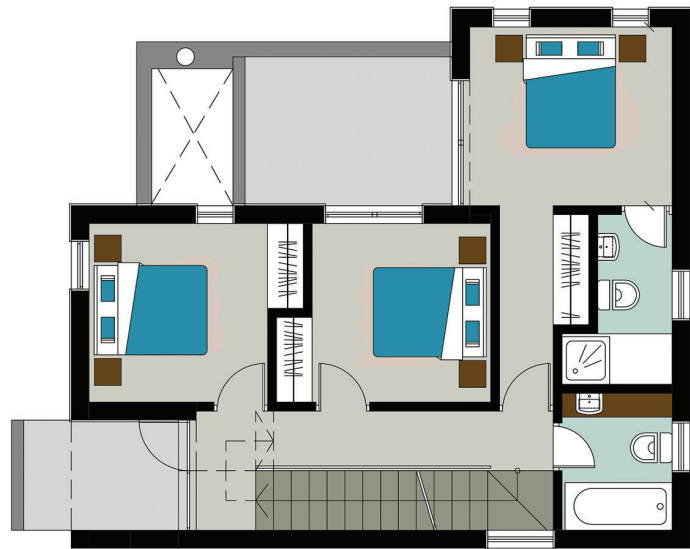
Bustling and lively, the sea-side town of Limassol offers tempting Mediterranean living with great nightlife and a wide range of entertainment. With superb infrastructure and immaculate road network, the place is conveniently linked to other towns and mountain villages offering refreshing retreat in scorching summer days.

Project consists of 7 villas with the roof gardens and basements, that are distinguished by exquisite architectural design on the backdrop of impressive Limassol landscape. Satisfied residents will benefit from the proximity of a plethora of shops, restaurants and other urban amenities. The residential units are designed with a high aesthetic value, combining all the elements of comfort and practicality.

GROUND FLOOR



FIRST FLOOR



ROOF GARDEN



| Villa № | Beds | Total covered area | Uncovered Veranda | Roof Garden | Plot | Sw. Pool |
|---------|------|--------------------|-------------------|-------------|------|----------|
| 1 | 3 | 264.2 | 46 | 41.4 | 155 | Common |
| 2 | 3 | 264.2 | 46 | 41.4 | 157 | Common |
| 3 | 3 | 266.5 | 46 | 41.4 | 164 | Common |
| 4 | 3 | 266.5 | 46 | 41.4 | 166 | Common |
| 5 | 3 | 284.5 | 46 | 41.4 | 245 | Common |
| 6 | 3 | 255.2 | 46 | 41.4 | 199 | Common |
| 7 | 3 | 255.2 | 46 | 41.4 | 184 | Common |



A modern, multi-story apartment building at night. The building features a mix of concrete, glass, and dark wood paneling. A balcony on the upper floor is visible with outdoor furniture and potted plants. The ground floor has a glass entrance and a wall with the 'VENERA RESIDENCES' logo. The scene is illuminated by warm interior and exterior lights.

apartments

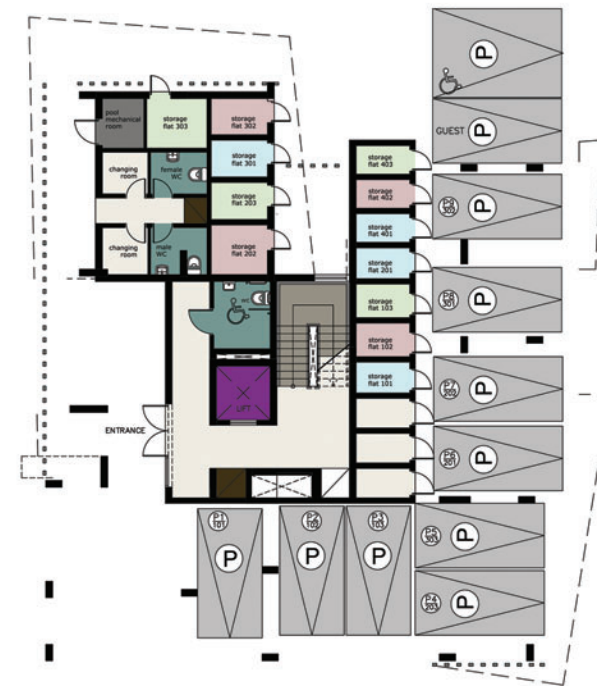
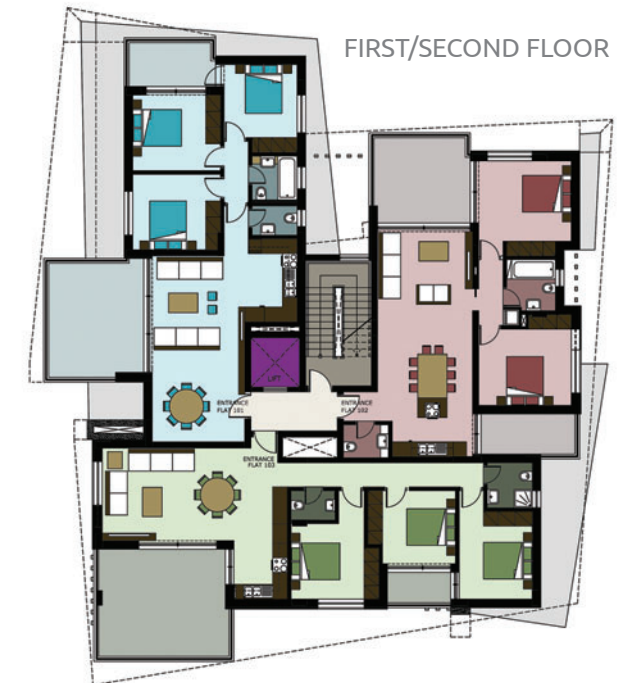
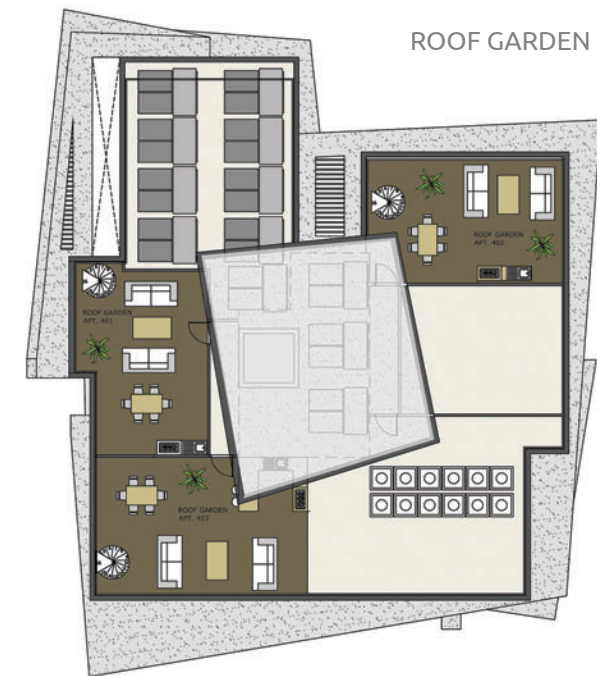
a lifetime of
MEMORIES

Nestled in a sought after location in the heart of a Limassol, apartments at Venera Residences offer luxurious privacy and tranquillity just a stone throw away from the luring award winning beaches, five star resorts and contemporary services.

Apartment complex consists of twelve 2 and 3-bedroom apartments with striking and edgy interior design. Residents can enjoy living ultimate in ultimate comfort in larger than average apartments, with security of knowing that everything they need is at their fingertips. Creating a close knit community where one lives is of paramount importance, Venera Residence apartments provides just a space to do so.



| Apt.Nº | Beds | Covered area | Sw. Pool | Roof garden |
|--------|------|--------------|----------|-------------|
| 101 | 3 | 136.2 | Common | - |
| 102 | 2 | 124.3 | Common | - |
| 103 | 3 | 146.4 | Common | - |
| 201 | 3 | 136.2 | Common | - |
| 202 | 2 | 124.3 | Common | - |
| 203 | 3 | 146.4 | Common | - |
| 301 | 2 | 125.2 | Common | - |
| 302 | 2 | 124.3 | Common | - |
| 303 | 3 | 156.4 | Common | - |
| 401 | 2 | 125.2 | Common | 41 |
| 402 | 2 | 124.3 | Common | 42 |
| 403 | 3 | 156.4 | Common | 50 |





Location

Only few locations in Limassol can offer you the exhilarating experience of being so intimately close to the Mediterranean beach and the same time offer easy access to the tourist area of Limassol. This unique project has been designed to provide you with the comfort and luxury that you desire. It is located just 200 meters from the most spectacular beaches of Apollonia Hotel 5*.





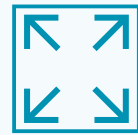
AT THE GLANCE



7 Villas



12 Apartments



Large living space



Perfect location



Roof gardens



Family complex



Beautiful gardens



Park area



Swimming pool



Deck area



Quality materials



Modern living



Every effort has been made to provide accurate measurements and a fair description of the properties included within this literature, but this information cannot be guaranteed. This literature is only intended to provide an indication of the general style of our development and forms no kind of contract. Property Gallery Ltd reserves the right to alter the design and specification, external finishes and elevation treatments where shown at any time, for any reason without prior notice. Property images are computer generated impressions and not necessarily to scale, and landscaping in the Site Plan is for illustrative purposes. Floor plans are not to scale and all measurements are approximate.